

Recognition of Your Heritage Garden

Your Conservation District recognizes homeowners and businesses who create and maintain Heritage Gardens.



Landscaping may range from the more conventional, manicured look to that of natural gardens resembling the shrub-steppe and riparian habitats of our region.

Landscaping is evaluated based on a checklist. By meeting the minimum requirements, an appropriately landscaped area will be designated as a Heritage Garden. Owners of Heritage Gardens receive a yard sign.

By displaying the Heritage Garden sign, property owners show their commitment to water-smart landscaping and appreciation of our natural and cultural heritage.



"Study nature, love nature, stay close to nature. It will never fail you."

- Frank Lloyd Wright

Your Local Conservation Districts provide:

Information & education on creating a Heritage Garden;

Review of your design & plant selection before you plant; and

Certification of your Heritage Garden!

About the Program

The Heritage Garden Program was created by the Benton Conservation District in partnership with the

Columbia Basin

Chapter of the Washington Native Plant Society.



NORTH YAKIMA CONSERVATION DISTRICT

1606 Perry Street, Suite C

Yakima, WA 98902

(509) 454-5743 ext. 5

northyakimacd.wordpress.com

SOUTH YAKIMA CONSERVATION DISTRICT

200 Cheyne Road

Zillah, WA 98953

(509) 829-9025

www.sycd.us

Funding for Heritage Gardens
in Yakima County Provided by:



Heritage Gardens



Water-Smart Landscaping

HONORING THE HERITAGE OF THE
Columbia River Basin

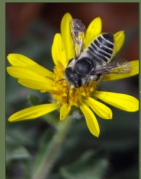
Bring the Columbia River Basin into Your Garden

Flora & Fauna

Include flora that are native to our area.



Jane Abel



Mace Vaughan

Xerces Society

Select plants and other features such as water sources that will attract birds, butterflies and more.

Indigenous Peoples



Terry Richard, The Oregonian

The tribes have inhabited the Columbia River watershed for thousands of years, utilizing

its plant and animal resources. Incorporate the ethnobotany of the tribes into your Heritage Garden by including plants used for food, shelter, and medicines.

Heritage Gardens are landscaped areas designed to honor the cultural & natural heritage of the Columbia River Basin while utilizing sustainable gardening practices.

Heritage Gardens:

Promote the use of native plants, especially those of cultural significance;

Promote low water-use landscaping & efficient irrigation methods; and

Educate our community about the history & biodiversity of the Columbia River Basin.

Lewis & Clark Expedition

The expedition's travels took them along the Snake and Columbia rivers where numerous plant species were discovered. Include in your Heritage Garden some of the species noted in Meriwether Lewis' journals.



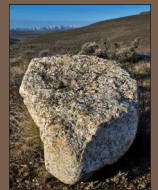
Washington State Historical Society
catalog no. 2005.22.35

Geologic History

Basalt flows and ice-age floods shaped the predominate geologic features of the Columbia River Basin. Incorporate this heritage into your garden with basalt columns, paths of basalt gravel, and other garden features made of basalt; flood-tumbled rock; and ice-raftered erratics.



City of Othello



Tom Foster
www.hugefloods.com